



# Tracking Community Change

September 23, 2015

MINNESOTA **COMPASS** | [mncompass.org](http://mncompass.org)

 @MNCompass

Measuring progress. Inspiring action.

# What is MN Compass?

By tracking and analyzing trends in areas that affect our quality of life, Compass gives everyone in our state – policymakers, business and community leaders, and concerned individuals who live and work here – a common foundation to act on issues to improve our communities.

# Thank you, Compass funders!

3M Foundation

Bush Foundation

Blue Cross and Blue Shield  
of Minnesota Foundation

Boston Scientific

Otto Bremer Foundation

Greater Twin Cities United Way

Mardag Foundation

The McKnight Foundation

The Minneapolis Foundation

Minnesota Initiative Foundations

The Saint Paul Foundation

Wells Fargo Foundation

Amherst H. Wilder Foundation







Compass Governance Committee

# What can I find on MNCompass.org?

## **Information by Topic**

- **Overview**
- **Key Measures**
- **More Measures**
- **Library**
- **Ideas at Work**

## **Information by Community** (region, county, city, some neighborhoods)

- **“Profiles” or summaries of the community’s Key Measures & other info**

## **Analysis**

- **“Insights” articles**
- **Featured trends**

# Compass Topics & advisory group conveners

- **Aging** – Dawn Simonson, Metropolitan Area Agency on Aging
- **Children and Youth** – Chris Ganzlin, The McKnight Foundation
- **Civic Engagement** (1<sup>st</sup>) – Sean Kershaw, Citizens League  
**Civic Engagement** (2<sup>nd</sup>) – Diane Tran, Health East Care System and Minnesota Rising
- **Disparities** – Sandra L. Vargas, Minneapolis Foundation
- **Early Childhood** – Barbara Yates, Minnesota Early Learning Foundation
- **Economy & Workforce** (1<sup>st</sup>) – Michael Gorman, Split Rock Partners  
**Economy & Workforce** (2<sup>nd</sup>) – Bill Blazar, Minnesota Chamber of Commerce, and  
Kathy Tunheim, Senior Advisor to the Governor for Job Creation
- **Education** (1<sup>st</sup>) – Alice Seagren, Commissioner, Minnesota Department of Education  
**Education** (2<sup>nd</sup>) – Marilee Grant, Boston Scientific, and  
Brenda Cassellius, Commissioner, Minnesota Department of Education
- **Environment** – Steve Morse, Minnesota Environmental Partnership
- **Health** – Mary Brainerd, HealthPartners
- **Housing** – Tim Marx, Commissioner, Minnesota Housing
- **Immigration** -- Bill Blazar, Minnesota Chamber of Commerce, and  
Sandra L. Vargas, The Minneapolis Foundation
- **Public Safety** – Tom Johnson, Council on Crime and Justice
- **Transportation** (2007) – Bob Johns, Center for Transportation Studies, U. of M.  
**Transportation** (2014) – Charles Zelle, Commissioner, Minnesota Department of Transportation



## TOPICS

Aging Children & Youth Civic Engagement Demographics Disparities Early Childhood Economy  
Education Environment Health Housing Immigration Public Safety Transportation Workforce

Google Custom Search GO

## WELCOME MINNESOTA

By tracking and analyzing data in areas that affect our quality of life, Compass gives everyone in our state – business and community leaders, and all concerned individuals who live and work here – a common foundation to act on issues to improve our communities. [MORE >](#)

Overview

Key measures

More measures

Ideas at work

STEM

Generation Next

Library

3rd grade reading scores

8th grade math scores

High school graduation

## COMPASS NEWS

 **Minnesota Compass** @MNCompass 17h  
South metro district, school receive Green Ribbon awards  
[@erintrib](#)  
[startribune.com/local/blogs/30...](#)  
Data on MN districts  
[mncompass.org/education/high...](#)  
[Show Summary](#)

 **Craig Helmstetter** @c\_helmstetter 4 May  
Twin Cities shelters scramble to help homeless seniors by  
[@jessvanb](#) [tribune.com/LJKb/4](#) & see homeless by age data  
[mncompass.org/housing/homele...](#)  
Retweeted by Minnesota Compass  
[Show Summary](#)

 **Minnesota Compass** @MNCompass 19h  
Females in MN consistently graduate at slightly higher rate (84% in '14) than males (79%)  
[mncompass.org/education/high...](#)

## NEW



### Transportation measures

We just released new and updated transportation key measures: Road condition, costs, access to jobs, and congestion. Looking for data on traffic accidents and death? Now find it under Public Safety.

[CHECK THEM OUT >](#)

## FEATURED TREND



### 40 by '40

Although the Twin Cities region is

## INSIGHTS



### Promoting a talented, diverse workforce

*GREATER MSP has the expressed mission of accelerating job growth and capital investment for the Minneapolis-Saint Paul 16-county region. We asked CEO Michael Langley to provide his insights on the region's ability to develop, attract, and retain a diverse workforce.*

[READ MORE >](#)

## NEW IN OUR LIBRARY

- The State of Minnesota Public



## GEOGRAPHIC PROFILES

Find data organized by geographic area. Get profiles for the state, Minnesota's 7 regions, 87 counties, and cities with populations of 1000+.  
[View profiles](#)

### More profiles

Minneapolis and Saint Paul neighborhoods  
East metro area of the Twin Cities  
Duluth - select neighborhoods

## OUR SPONSORS

3M Foundation  
Blue Cross and Blue Shield of Minnesota Foundation  
Boston Scientific  
Otto Bremer Foundation  
Bush Foundation  
Greater Twin Cities United Way  
Mardag Foundation  
The McKnight Foundation





## EDUCATION

### Overview

### Key measures

- 3rd grade reading scores
- 8th grade math scores
- High school graduation

### More measures

### Ideas at work

### STEM

### Generation Next

### Library

### SHARE THIS PAGE



### FOLLOW MNCOMPASS



## CIVIC ENGAGEMENT

### Overview

### Key measures

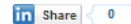
- Sense of community
- Voter turnout
- Perceived ability to improve community
- Volunteerism

### More measures

### Ideas at work

### Library

### SHARE THIS PAGE



### FOLLOW MNCOMPASS



Home > Education

# MORE MEASURES

Looking for more data? We've identified these links to useful education-related data sets and data-rich sites.

## DATA SETS

National Assessment of Educational Progress (NAEP), State Profiles  
Also called the "Nation's Report Card," the NAEP is the only nationally

## RELATED KEY MEASURES

- Connections to caring adults
- Early childhood screening
- Educational attainment
- Enrichment activities
- Proportion of adults working
- Postsecondary degree completion
- Set of STEM-related measures

Home > Civic Engagement

# IDEAS AT WORK

Find initiatives and collaborations working to increase civic engagement in Minnesota and learn about effective strategies for action.

## INITIATIVES AND COLLABORATIONS

### Citizens League

The Citizens League builds civic imagination and capacity in Minnesota.

## GREAT IDEA



See how Junior Achievement taps the expertise of corporate volunteers to

## ENVIRONMENT

Home > Environment

### Overview

### Key measures

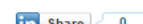
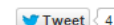
- Air quality
- Greenhouse gas emissions
- Protected natural land

### More measures

### Ideas at work

### Library

### SHARE THIS PAGE



### FOLLOW MNCOMPASS



# LIBRARY

Looking for new and notable information to help you dig deeper into an issue? Start with these featured reports and web sites, and then browse through our full selection by topic.

## REPORTS: FEATURED

Minnesota Climate and Health Report 2015: An Assessment of Climate Change Impacts on the Health and Well-Being of Minnesotans  
Minnesota Department of Health, April 2015, 100 pp.

This report provides a comprehensive assessment of climate change impacts and potential health burden for the state. In addition to describing climate trends and projections relevant to Minnesota, the report identifies how these climate changes are linked to health impacts along with opportunities and challenges for developing quantitative measures of health outcomes. [more info >](#)

Swimmable, Fishable, Fixable? What We've Learned So Far About Minnesota Waters

Minnesota Pollution Control Agency, April 2015, 25 pp.

Findings from the midpoint of a comprehensive look at water quality throughout Minnesota. The Minnesota Pollution Control Agency have used a watershed approach to take an in-depth look at the lakes and streams in half of the state's 81 major watersheds. [more info >](#)

Where Do Americans Usually Shop for Food and How Do They Travel to Get There? Initial Findings from the National Household Food Acquisition and Purchase Survey

United States Department of Agriculture, March 2015, 21 pp.

This report compares shopping patterns of Supplemental Nutrition Assistance Program (SNAP) households to low- and higher income nonparticipant households. Participants in the Special Supplemental Nutrition Assistance

## VIEW BY TOPIC

- Featured
- Access to Healthy Food (19)
- Air (7)
- Climate & Energy (20)
- Ecosystems (4)
- Environmental Health (15)
- Land Use (14)
- Sustainable Living (6)
- Water (15)
- Other (3)



## MAKE A RECOMMENDATION

Have you read a recently published research report on this topic? Let us know and we will add it to our collection.

[SUBMIT RECOMMENDATION >](#)

# ROCHESTER

Located in: Olmsted County, Southern Region, Minnesota

SHOW MARGINS

## Demographics

|                         |                |                     |                                    |
|-------------------------|----------------|---------------------|------------------------------------|
| Total population        | 108,814        |                     | State Demographic Center, 2012 [1] |
| <b>Total population</b> | <b>110,731</b> |                     | American Community Survey, 2013    |
| White non-Hispanic      | 86,294         | 77.9%               |                                    |
| Of Color                | 24,437         | 22.1%               |                                    |
| American Indian         |                | <i>less than 1%</i> |                                    |
| Asian                   | 7,508          | 6.8%                |                                    |
| Black                   | 7,390          | 6.7%                |                                    |
| Hispanic (any race)     | 6,237          | 5.6%                |                                    |
| Some other race         |                | <i>less than 1%</i> |                                    |
| Two or more races       | 3,185          | 2.9%                |                                    |
| Population by age       |                |                     | American Community Survey, 2013    |
| Under 5                 | 8,746          | 7.9%                |                                    |
| 5 to 17                 | 18,677         | 16.9%               |                                    |
| 18 to 64                | 68,527         | 61.9%               |                                    |
| 65+                     | 14,781         | 13.3%               |                                    |
| Median age              | 35.5           |                     | American Community Survey, 2013    |

## Aging

|  |        |       |                                 |
|--|--------|-------|---------------------------------|
| Total civilian, non-institutionalized population (65+) | 13,855 |       | American Community Survey, 2013 |
| Individuals with one or more disabilities (65+)        | 4,720  | 34.1% |                                 |

# OLMSTED COUNTY

Located in: [Southern Region, Minnesota](#)

| DEMOGRAPHICS  | 2000     | MOST RECENT DATA     |
|---|----------|----------------------|
| Total population                                      | 124,277  | 149,226 (2013)       |
| Percent of Color                                      | 11.0%    | 17.8% (2013)         |
| Median age  | 35.0     | 36.6 (2013)          |
| AGING   |          |                      |
| Percent age 65+                                       | 10.8%    | 14.4% (2015)         |
| Median household income, 65+ head of household        | \$41,726 | \$41,782 (2008-2012) |
| CHILDREN AND YOUTH                                    |          |                      |
| Population under 20                                   | 36,592   | 40,297 (2013)        |
| Students connected to a caring adult in the community | N/A      | 56.1% (2013)         |
| Students highly engaged in enrichment activities      | N/A      | 65.7% (2013)         |
| CIVIC ENGAGEMENT                                      |          |                      |
| Voter turnout   | 65.9%    | 44.6% (2014)         |
| EARLY CHILDHOOD                                       |          |                      |
| Percent low birth weight among single births          | 3.9%     | 4.7% (2013)          |
| Percent of children screened who were under age 5     | N/A      | 86.5% (2013)         |
| Number of children screened who were under age 5      | N/A      | 2,048 (2013)         |
| ECONOMY   |          |                      |
| Median household income                               | \$71,665 | \$64,385 (2012)      |
| Percent of individuals below the poverty level        | 5.4%     | 8.3% (2013)          |

# Analysis

MINNESOTA COMPASS ... Measuring progress. Inspiring action. [About](#) [Trends](#) [Profiles](#) [Contact](#)

TOPICS [Aging](#) [Children & Youth](#) [Civic Engagement](#) [Demographics](#) [Disparities](#) [Early Childhood](#) [Economy](#) [Education](#) [Environment](#) [Health](#) [Housing](#) [Immigration](#) [Public Safety](#) [Transportation](#) [Workforce](#)

TRENDS [Overview](#) [Featured trends](#) [New data](#) [Insights](#)


Home > Trends > Insights

AUGUST 2015

## Measuring community-level change: 5 post-rail highlights

*The newly released **Central Corridor Tracker** and **Big Picture Project** reports, measure the impact of light rail on neighborhoods along University Avenue between downtown Minneapolis and downtown Saint Paul.*


*Compass researcher Ellen Mai, who managed the data analysis for the projects, reflects on the latest outcomes and shares key takeaways.*



1. Between 2010 through 2013, more than 3,500 new housing units were added along the Corridor

DEVELOPMENT & DENSITY UP

FEATURED TREND



### Fewer people lack health insurance

Minnesota and the U.S. as a whole saw a substantial drop in the number and proportion of residents without health insurance between 2013 and 2014. In Minnesota, 314,000, (6.7%), of residents under age 65 lacked health insurance in 2014, down from 436,000 (9.3%) in 2013. Nationally, the rate dropped over 3 percentage points.

[SEE MORE TRENDS >](#)

Home > Trends

## INSIGHTS

**Ellen Mai | August 2015**  
**Measuring community-level change: 5 post-rail highlights**  
 The newly released **Central Corridor Tracker** and **Big Picture Project** reports measure the impact of light rail on neighborhoods along University Avenue between downtown Minneapolis and downtown Saint Paul.  
 Compass researcher Ellen Mai, who managed the data analysis for the projects, reflects on the latest outcomes and shares key takeaways.  
[Read more >](#)

**Greg Owen | June 2015**  
**What have we learned from 30 years of studying homelessness in Minnesota?**  
 Willie Rosenow completed his study of homelessness in St. Paul in 1984. 31 had-line homelessness had become more prevalent due to recession, closing of psychiatric hospitals, removal of shelter housing as part of federal urban renewal, and increases in federal funding.  
[Read more >](#)

**Marked Chess | June 2015**  
**The early learning debate**  
 What is the right position to help realize the ambitious universal preschool? Dr. Marked Chess, senior research manager at Miller Research, weighs in. Dr. Chess is the author of a new policy brief, *Compensating Early Childhood Educators for Passion, Expertise, and Educational Inequality*.  
[Read more >](#)

**Mike Langley | April 2015**  
**Promoting a talented, diverse workforce**  
 CHS's "TRIP" has the mission of accelerating job growth and capital investment for the Minneapolis-Saint Paul (MSR) region. His latest CEO Mike Langley to provide his insights on the region's ability to attract, retain, and train a diverse workforce.  
[Read more >](#)

**Greg Hines and R.T. Ryan | March 2015**  
**Addressing a "social determinants" of education**  
 Correlation does not mean causation, but the correlation between socioeconomic status and educational achievement is strong. Greg Hines and R.T. Ryan discuss the implications for education.  
[Read more >](#)

**Paul Mahoney | March 2015**  
**The Minnesota Paradox**  
 The U.S. has a long list of states which, throughout the past few decades, have heralded Minnesota's high quality of life. However, a recent, more detailed list of the states which are the most livable in the U.S. has been released. What are the reasons for the Minnesota Paradox?  
[Read more >](#)

**Susan Brewer | January 2015**  
**Minnesota on the move: Examining migration patterns**  
 The state demographer's office recently analyzed patterns of migration to better understand the state's changing demographics. Susan Brewer highlights some key findings, and gives her insight into what they mean.  
[Read more >](#)



# Ways we get the word out

Convening  
and events

Social media

Newsletters

Traditional  
media

Websites

Presentations

TOPICS

- Aging
- Children & Youth
- Civic Engagement
- Demographics
- Disparities
- Early Childhood
- Economy
- Education
- Environment
- Health
- Housing
- Immigration
- Public Safety
- Transportation
- Workforce

Google Custom Search

GO

STEM IN MINNESOTA

Overview

Support early learning

Early childhood screening

Inspire interest

Classroom time

Interest

Science proficiency

Make connections and build foundations

Out-of-school activities

Teacher supply

Math proficiency

Excite, challenge, and prepare

Interest/ability

Certificates/degrees

Work, advance, and innovate

Employment

Occupational needs

Disparities

Gender

Income status

Race/ethnicity

Systems and supports

Home

School

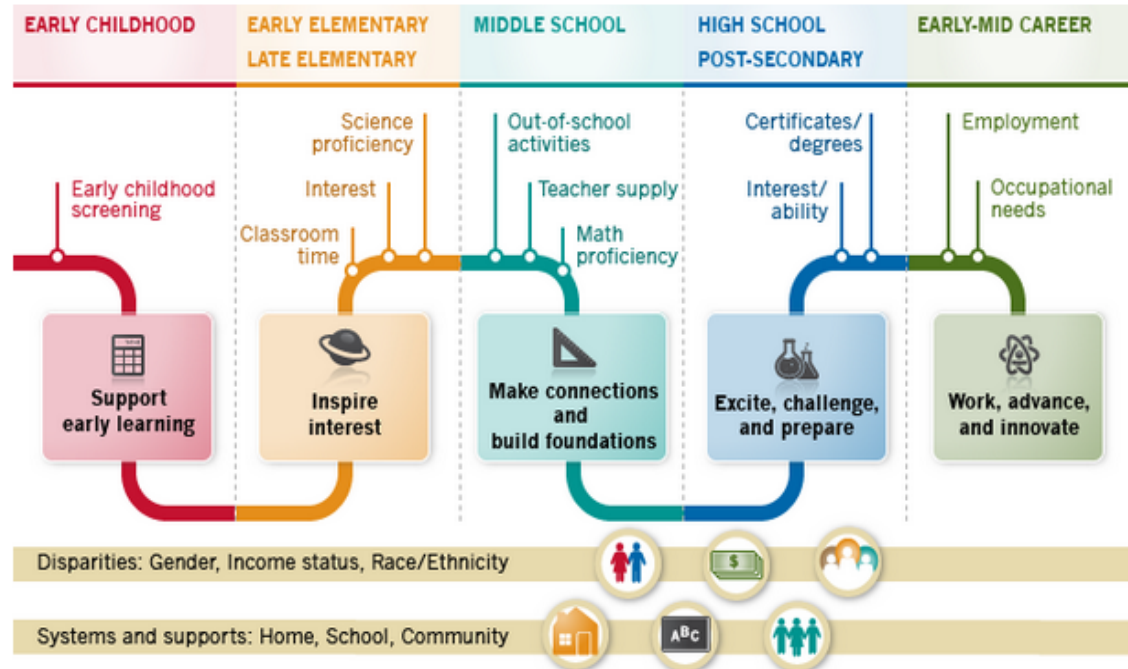
Community

Home > Education > STEM

STEM IN MINNESOTA OVERVIEW

STEM (Science, Technology, Engineering, Math) education is critical to Minnesota's prosperity, developing workers with the skills to meet 21st century employment needs. Explore data, research, and resources to support people in STEM and address [disparities](#) by navigating the infographic below. Just click on the themes within each life stage or directly on any key measure. [More about the project](#)

STEM CRADLE-TO-CAREER CONTINUUM



## TOPICS

Aging Children & Youth Civic Engagement Demographics Disparities Early Childhood Economy Education  
Environment Health Housing Immigration Public Safety Transportation Workforce

Google™ Custom Search

GO

## GENERATION NEXT

## Overview

## Enrollment numbers

[Kindergarten enrollment](#)[3rd grade enrollment](#)[8th grade enrollment](#)[12th grade enrollment](#)

## Key measures

[Kindergarten readiness](#)[3rd grade reading proficiency](#)[8th grade math proficiency](#)[High school graduation](#)[Post-secondary credentials](#)Cross-topic measures  
(region)[5th grade science proficiency](#)[Connection to caring adults](#)[Home](#) > [Education](#) > [Generation Next](#)GENERATION NEXT  
OVERVIEW

Generation Next, a powerful coalition of civic, business and education leaders, aims to close the achievement and opportunity gaps for students of color in Minneapolis and St. Paul. We use rigorous data analysis and community engagement to identify what works to close these gaps, and replicate the most promising practices.

- Goal 1: Each child enters kindergarten with the literacy, social and emotional strengths needed for successful learning.
- Goal 2: By end of 3rd grade, each student meets key benchmarks for success in reading and reading comprehension.
- Goal 3: By end of 8th grade, each student is on track to meet benchmarks for success in math.
- Goal 4: Each student graduates from high school ready for college and career.
- Goal 5: Every high school graduate earns a post-secondary degree or certification.



## GENNEXT NEWS

[Charleston to Generation Next; We choose to push](#)

[We put top literacy organizations in 1 room with 1 goal](#)

[An Alternative Education](#)

[Tapping Brain Power to Build More Brain Power](#)

## Goal 2: 3rd Grade Reading

### Data

→ [About the Data](#)

→ [Goal 1: Kindergarten Readiness](#)

→ [Kindergarten Enrollment Data](#)

→ [Goal 2: 3rd Grade Reading](#)

→ [3rd Grade Enrollment Data](#)

→ [Goal 3: 8th Grade Math](#)

→ [8th Grade Enrollment Data](#)

→ [Goal 4: High School Graduation](#)

→ [12th Grade Enrollment Data](#)

→ [Goal 5: Postsecondary Data](#)

→ [Find related data on Minnesota Compass](#)

### Goal 2: 3rd Grade Reading Benchmarks

By end of 3rd grade, each student meets key benchmarks for success in reading and reading comprehension.

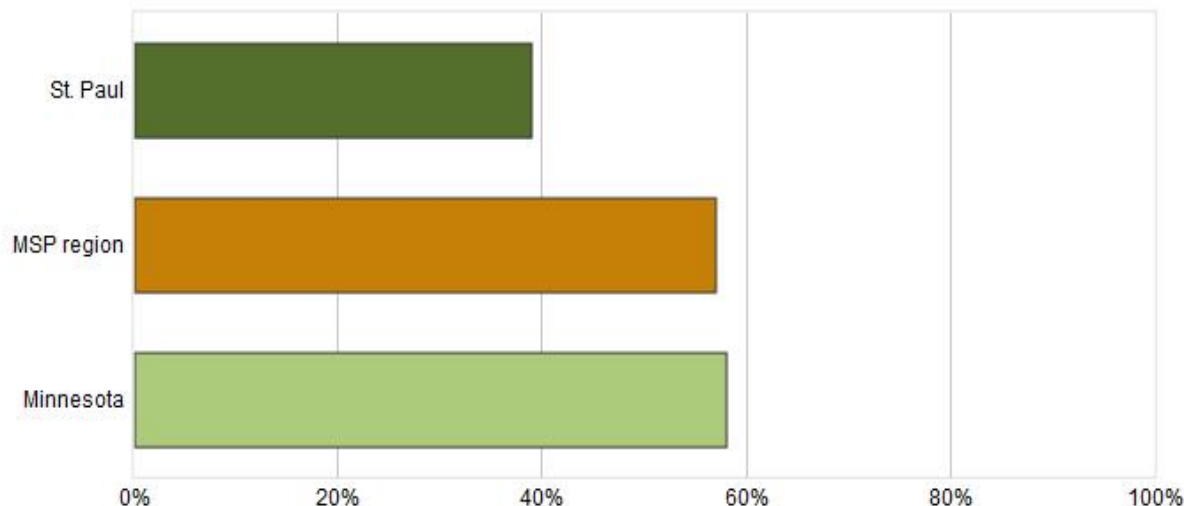
REGION: St. Paul ▾

BREAKDOWN: St. Paul, MSP region, and MN ▾

VIEW: Graph ▾

### 3rd grade students achieving reading standards

St. Paul, MSP region, and Minnesota, 2014





## Geographic profiles

### STEM IN MINNESOTA



## Racial Equity Resource Directory



**Minneapolis-Saint Paul Workforce Dashboard**

**THE BIG PICTURE THE PROJECT**  
Aligning Central Business Districts

**MSP REGIONAL INDICATORS DASHBOARD 2015**

**ULI Minnesota**  
Regional Council of Mayors

**ITASCAsproject**

**MINNESOTA BUSINESS PARTNERSHIP**

**THE MCKNIGHT FOUNDATION**

**METROPOLITAN COUNCIL**

**GREATER MSP**  
Minneapolis Saint Paul Regional Economic Development Partnership

**SR@CC**  
SAINT PAUL AREA CHAMBER OF COMMERCE

**MINNEAPOLIS**  
REGIONAL Chamber of Commerce  
Metropolitan Chamber of Commerce  
Northwest Minneapolis Chamber of Commerce

**MINNESOTA CHAMBER of COMMERCE**

*Support for this work has been provided by Minnesota Philanthropy Partners through the Living Cities Integration Initiative.*

# Please keep in touch!

Craig Helmstetter, PhD

Project Director

[craig.helmstetter@wilder.org](mailto:craig.helmstetter@wilder.org)

651-280-2670



Text **MNCOMPASS** to 22828 to sign up for our e-newsletter



Sign up for our e-newsletter at **[mncompass.org](http://mncompass.org)**



Follow us on Twitter **@MNCompass**



Connect with MN Compass on Facebook